

The Story of Siesta Key Chapel

is a story of Christ-centered sacrifice and determination. What will YOU do to help carry on that grand legacy and tradition?

1970

Worship at
Out-of-Door
School



1974

Breaking Ground
for
“God’s Treehouse”



2007

**Expand
Enhance
Ensure**



**Expand
Enhance
Ensure**



God’s Treehouse

Siesta Key Chapel
4615 Gleason Avenue
Sarasota, Florida 34242
(941) 349-1166 siestakeychapel.org

“Our hope is that as your faith continues to grow, our ministries among you will greatly expand, so that we can preach the Gospel”

2 Corinthians
10:15,16



Can you imagine room enough

to worship,
to learn,
to play,
to grow?



“Our hope is that as your faith continues to grow, our ministries among you will greatly expand, so that we

can preach the Gospel”

Can you imagine looking down on God’s Treehouse 50 years from now and seeing the same vibrant smiles, the same Christ-centered actions, knowing that God used *you* to make it happen?

2 Corinthians 10:15,16

Now is the time to **Expand**
Enhance
Ensure

The goal? To enjoy the best of the Chapel today even as we preserve it for tomorrow.



A Word from the Pastor

A legitimate question when faced with a \$1.4 million price tag is “Are you sure we need it?”

After almost two years of prayer, study, and persistent review, the answer is clear: *Yes! We need to step up to the plate and do as others have done before us.*

Expand **Enhance** God’s Treehouse **Ensure**

We need more room for current programs.

We need to improve the infrastructure.

We need protection from wind and fire.

And yes, we need room to grow.

All this can be accomplished while preserving the unique beauty and character of our beloved *Treehouse*.

If not now, when?

If not you and me... who?

Thank you in advance for your prayerful support and generosity.

Pastor Kathi





SIESTA KEY CHAPEL
4615 GLEASON AVE. SARASOTA, FLORIDA

SMITH ARCHITECTS, P.A.
23 JUNE 06:30:00PM

There are many ways to give. What works best for you?

- Cash donations
- Tax free IRA donations
- A pledge over one to three years
- Transfer of assets
 - stocks
 - bonds
 - property

*God prospers me
to raise not my standard of living,
but my standard of giving*

Why change anything?



In March 2005 a Long Range Planning Committee was created by the Session to research and determine whether steps should be taken today to prepare for tomorrow's needs. At the time, we were experiencing a space crunch on Sunday mornings and wanted to be prepared for what tomorrow might bring.

The Session and staff were interviewed, space usage was monitored, and things were moving along nicely until... the summer of 2005. Suddenly, the church found itself in the enviable position of having more children's and fellowship programs on a Sunday morning than our facilities could handle.

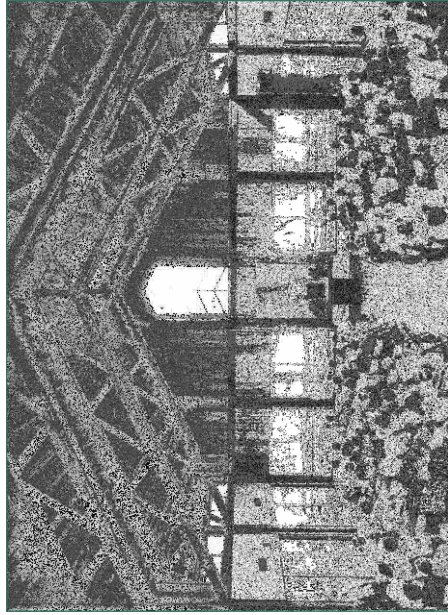
- Additional space was needed so that the Middle School and High School classes could be separated on Sunday mornings.
- Space was needed so that church-wide fellowship events could be set up and carried out without bumping the Adult Class out of its meeting room or pushing the limits of weekend youth volunteers.

In short, space was needed to meet today's rising needs and expectations.



This is not the first time God's Treehouse has faced the need to **Expand**

Thanks to the sacrifice and vision of a core of people led by organizing Pastor Rev. Jim Blackwood, we enjoy a worship space second to none. They saw the need for a Presbyterian church on Siesta Key and acted. Counting it a privilege to give more than they could afford, they built a welcoming spiritual home that continues to bless us and our families.



The first service of worship in God's Treehouse

The space provided by the first Capital Campaign in **1974** met the needs of the moment. But four years later it became clear that the Chapel needed to enlarge its campus to provide classrooms for a Sunday School. It was not easy to come up with a plan that maintained the simple beauty of the sanctuary but they did it. In **1979** the area beneath the sanctuary was enclosed.

Dear Friends,

I believe that God is calling us to respond with...

Equal Sacrifice, Not Equal Giving

Some of our members are in a position to make sizeable gifts, others are not. But all of us are able to think creatively and soberly about how to give — not “until it hurts”, but “until it feels good”.

**The world asks, ‘What does a person own?’
Christ asks, ‘How does he or she use it?’**

When we sacrifice, we give up some things that are important, so that things even *more important* become possible. Please search your heart. Let your Pledge be a matter of faith – a meaningful commitment of your love for God and your love for Christ’s church.

The good news is that money is already starting to come in.



Thank you and God bless,

Capital Campaign Chairperson



What will this cost?

The total cost of the project is \$1.4 million. Of this, approximately \$400,000 is for improvements to our infrastructure. This includes:

- Reinforcement of ceiling trusses
- Installation of:
 - a fire alarm system
 - a sprinkler system
 - hurricane shutters
- Electrical and AC upgrades



The remaining \$1 million will be used to renovate part of the Chapel, expand the deck and add a small building to shelter an elevator and restrooms on the level of the sanctuary.

We continue to be blessed by the dedication, vision, and sacrifice of others

In 1981 a Capital Campaign again raised funds to build the office/nursery building we now enjoy. Today, we can't imagine the Chapel without it!



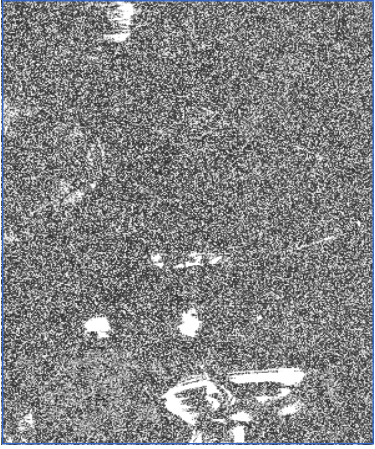
With time and continued growth, space again became an issue. In 1992 the deck was enlarged to add on four new classrooms and Fellowship Hall. At last, room for fellowship and socials!

Rev. Ray Woody said of the 1992 campaign, *“It was the easiest I’ve ever run. People saw the need and were glad for the opportunity to help meet it.”*



In 1994 a lovely Memorial Garden was added to further **Enhance** God's Treehouse.





**1974,
1979,
1981,
1992,
1994,
2007...**

Now, it's our turn

Last summer the Session unanimously endorsed a motion to contract with Smith Architects, P.A. to develop cost-effective plans to meet the needs while preserving the Chapel's simple beauty.

To date, four Town Hall meetings have taken place in the hope of involving every member in this process. The input of friends and members has been invaluable and more Town Hall meetings will be held as we go forward.

What is driving this effort?

It is driven by the immediate need for more space on Sunday mornings linked with the need to better protect church buildings from wind, fire, and the effects of life on a barrier island.

Ensure

The **Sanctuary trusses** will be reinforced where necessary. Time, climate and gravity have taken their toll.



Fire sprinkler and alarm systems will be installed in the sanctuary.

Hurricane shutters will add wind protection.

All buildings being renovated will be brought up to current **fire codes**. This includes:

- Adding new exit signs, and floodlights
- Bringing the electrical system up to code
- Replacing sanctuary chairs with the kind that interlock and do not fold. In an emergency, this keeps chairs from blocking exits—a hazard identified by the fire marshal.



Enhance

The **choir room** will be moved. It will take over the space currently used for the offices of the Pastor and Administrator.

The **administrative offices** will be moved to the building now housing classrooms 1 & 2. This will provide a number of benefits:

- For the first time, an office will be available for the Youth Minister
- The Bookkeeper's office and files will be moved from their current location beneath the sanctuary to an area above the flood plain
- It will create a new office for a Parish Associate or Parish Nurse

Non-load bearing walls inside the sanctuary will be removed, increasing seating capacity by forty-two. The woefully underutilized library will be moved to Fellowship Hall for greater visibility and use.

The pulpit will be raised to improve visibility.



The closer the Committee looked, the more it realized that the **Chapel was overdue for critical wind, fire, and safety Enhancements.**



The violence of previous hurricanes introduced a new reality to the Gulf Coast of Florida.

These “post-Charley” images of First Presbyterian Church in Punta Gorda demonstrate that painful truth.



The need for fire alarm and sprinkler systems in our all-wooden sanctuary is another area of critical concern.

Do we dare risk another year in the ‘Lightning Capital of the World’ without them?



Where does this bring us today?

We know the need.

We have creative, cost-effective blueprints.

We need the full support of members and friends

The challenge is to give above-and-beyond our 2007 *Operating Budget* in order to:

Expand
Enhance God's Treehouse
Ensure



Smith Architects, P.A. has developed blueprints and will oversee the operation. Their preliminary plans were presented to the congregation for review last fall, and were fine-tuned in response to feedback and suggestions. Ron Gallien, of *Delta Southern*, has been hired as the General Contractor.

Rest assured that contractor Ron Gallien and architect Mark Smith share our desire to maintain the stately beauty of God's Treehouse.

The Plan

Expand

New classrooms will be provided for Sunday mornings by soundproofing the area below the sanctuary.

The current deck outside of the sanctuary will be enlarged to 38' x 42'. It will include a modest two-story wood frame building that shelters:

- an elevator
- storage space on the ground floor
- two restrooms outside the sanctuary doors
- an usher/Communion preparation room
- a new children's play area under the deck



This graphic design shows the layout of the new deck. It will be open-air, but restrooms and the preparation room will be protected from the elements as shown.

